

# Nimsoft for Cisco Unified Computing System

## Automating Physical and Virtual Component Discovery and Monitoring Configuration and Deployment

### Key Features

- Automatically discovers physical and virtual elements
- Automatically configures and deploys monitoring based on flexible templates
- Automatically displays timely, accurate monitoring data
- Automatically adjusts monitoring to physical and virtual environment changes
- Templates for chassis elements, blades, fabric interconnects, VMs, and more

### Benefits

- Eliminates the overhead and expense of manual monitoring configuration and deployment within the UCS chassis
- Improved SLA compliance—with predictive monitoring and real time, well correlated alerts prevent downtime and reduce outage duration

### Introduction

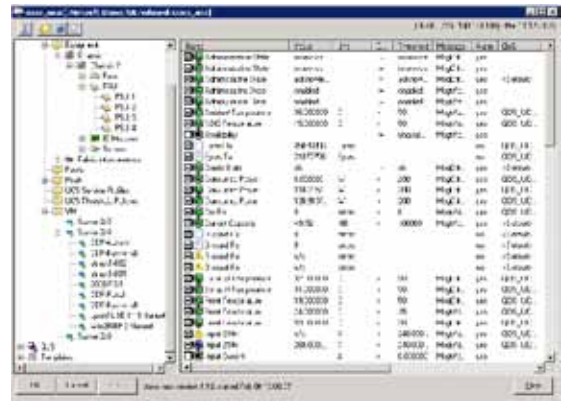
The Cisco Unified Computing System (UCS) is a next-generation data center platform that unites computing, networking, storage access, and virtualization into a cohesive system designed to reduce total cost of ownership (TCO) and increase business agility.

Nimsoft Monitor for Cisco UCS provides comprehensive capabilities for monitoring the entire UCS environment—including both physical and virtual components—equipping administrators with the insights they need to proactively manage and improve service levels.

Nimsoft Monitor automatically discovers components, querying the Cisco UCS Manager to detail the physical configuration of the UCS chassis, including blades, network adapters, fabric interconnects, disks, and fabric extenders. In addition, when the Cisco UCS manager is securely connected to VMware vCenter using vCenter extension files, Nimsoft Monitor for Cisco UCS can automatically discover the virtual environment within the Cisco UCS chassis. Once physical and virtual resources have been discovered, Nimsoft Monitor can automatically configure, deploy, and display monitoring data based on user-defined templates.

### Nimsoft Monitor for Cisco UCS offers these capabilities:

- A comprehensive view into the environmental status and historical operation of physical elements, including fans and fan modules, power supply units, fabric interconnects, and IO modules; and basic environmental monitoring of blade interfaces, processors, and memory arrays.
- Real-time views of the virtual environment ESX host and VM guest availability—views that automatically associate hosts with guest instances.
- Pre-configured alarm and alert settings, quality of service settings, dashboards, and more.





## Automated Configuration and Monitoring Templates

Nimsoft Monitor templating capabilities also allow for automatic configuration of monitoring of new elements when they are discovered—enabling the solution to automatically adjust to the results of replacements of hardware on failure or swap, and to changes in the virtual environments.

Nimsoft Monitor monitoring of virtual environments automatically adjusts to VM guest movement and resource allocation changes, whether applied by VMware DRS, HA, or vMotion. Templates are available for chassis elements, blades, fabric interconnects, VMs, and more. The result is seamless, automated monitoring of resources, which is a critical requirement for cost effectively managing processing-intensive, dynamic, and highly automated UCS environments.

## Multi-tenancy Support

Cisco UCS is designed with hardware-based multitenancy to easily and securely support multiple customers.

## About Nimsoft

Nimsoft is a global leader in IT Management-as-a-Service. The company's lightweight ITMaaS solutions make it easy for enterprises and service providers to implement comprehensive, adaptable monitoring and service desk capabilities essential for managing today's dynamic computing environments. Learn more at [www.nimsoft.com](http://www.nimsoft.com).

Nimsoft's multi-tenant architecture offers unparalleled support for multi-tenant UCS environments.

## Built on Nimsoft Unified Monitoring Architecture

Nimsoft Monitor for Cisco UCS monitoring is built on the Unified Monitoring architecture, which enables complete monitoring of IT environments—including physical and virtual infrastructure, applications, transaction times, servers, networks, and more. When Cisco UCS monitoring is combined with Nimsoft Monitor for VMware and other solution elements, the result is a unified view of the UCS environment—including virtual components and applications within the virtualized environment—as well as of the wider data center. The result is a complete, single-pane-of-glass view of a customer's entire IT infrastructure.

## Metrics Collected

Nimsoft for Cisco UCS collects a variety of metrics by physical component. Physical component metrics include status, presence,

performance status, power levels, temperatures, fan speeds, voltage, power usage, and more.

Metrics are collected from the Cisco UCS manager for the following physical components:

- Chassis
- Chassis fan module
- Chassis fans
- Power supply units
- IO modules
- Blade servers
- Blade server adaptor units
- Blade server memory arrays
- Blade server processors
- Fabric interconnect fans
- Fabric interconnect power supplies
- Fabric interconnect IO modules and ethernet ports
- Fabric interconnect IO module fibre channel ports
- Fabric interconnect local storage and dynamic counters

### North America Headquarters

U.S. toll free:  
1 877 SLA MGMT (752  
6468) 1 408 796 3400

Email: [info@nimsoft.com](mailto:info@nimsoft.com)  
Web: [www.nimsoft.com](http://www.nimsoft.com)

### United Kingdom

+44 (0) 845 456 7091

### Norway & Northern Europe

+47 22 62 71 60

### Germany

+49 (0)89 - 99 61 90 60

### Australia

+61 (0)2 9236 7216

### Brazil

+5511 5503 6243

### Mexico City

+52 (55) 5387 5406

### Singapore

+65 64328600

### New Delhi

+(91 11) 6656 6667

### Mumbai

+(91 22) 66413800