

# Nimsoft Monitor for WebLogic

## Optimizing Availability and Performance of J2EE Application Services

### Features

- Robust, intuitive management interface makes all administrative tasks fast and easy.
- Enables streamlined, centralized management of multiple WebLogic servers.
- Includes automatic resource discovery capabilities for simplified management configuration.
- Supports agentless monitoring of WebLogic servers running on any supported platform.

### Benefits

- Significantly reduce complexity of WebLogic administration.
- Enjoy cost and time savings through streamlined administration of complex J2EE environments.
- Ensure SLA compliance of business critical services.

### Introduction

As they work to better align business needs with IT, many organizations have embraced service-oriented architectures (SOA). For organizations adopting SOA, Oracle WebLogic has become one of the top platform choices. The WebLogic Server is a Java-based application server that has helped streamline development and ease integration in organizations around the world.

Once deployed, WebLogic server represents an integral part of an increasingly complex SOA infrastructure—and a central hub upon which many associated applications and systems rely. Given the central role the WebLogic platform plays, maintaining optimal performance and availability is vital. But how do administrators efficiently monitor multiple WebLogic servers within the context of these complex SOA environments?

### The Solution

Nimsoft Monitor for Oracle WebLogic enables administrators to centrally monitor all WebLogic servers within the enterprise. With Nimsoft Monitor for WebLogic, administrators can more effectively ensure that any irregularities in performance and availability are detected at the earliest possible stage, and so better ensure these servers deliver optimal performance and reliability.

Nimsoft Monitor for WebLogic offers an array of features specifically designed to make it easy to do monitoring configuration and administration in large, distributed environments. The solution can automatically discover and monitor any WebLogic installation on a host machine, as well as all sub components. As a result, the Nimsoft Monitor for WebLogic makes it easy to get all the performance and availability metrics required, even in multi-server environments.

Nimsoft Monitor for WebLogic uses the JMX interface to offer an agentless approach to monitoring, meaning it can automatically gather a wealth of availability and performance metrics—without requiring any additional software to be added to the hosted server.

With Nimsoft Monitor for WebLogic, administrators get the quality of service data they need to understand performance trends and take precautionary actions—before users experience any outages or service degradation.

## Monitoring Features that Yield Practical Insights

Nimsoft Monitor for WebLogic:

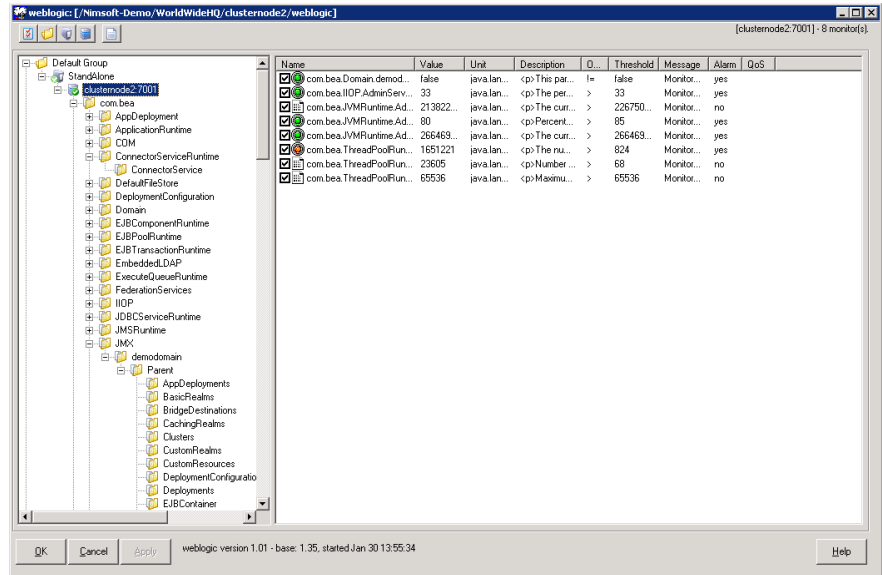
- Offers centralized, agentless monitoring of multiple WebLogic server installations utilizing the JMX interface.
- Monitors server metrics and response time of individual WebLogic servers.
- Features support for WebLogic server clusters, including administration and execution servers.
- Provides quality of service data for trend analysis.
- Monitors compliance with service level agreements.

Armed with these insights, administrators can more effectively:

- Detect WebLogic server problems and performance degradations quickly.
- Identify bottlenecks and point of failure.
- Take corrective actions before problems impact service levels.
- Minimize service downtime.

### Part of the Nimsoft Monitor Family

With Nimsoft Monitor solutions, enterprises and service providers gain a centralized, cohesive view of their entire infrastructure. Whether an IT organization wants to monitor a specific network element, or the entire infrastructure on which a mission-critical application is based—including the associated network elements,



databases, application servers, and more—they can do it all with the Nimsoft Monitor product suite.

In addition to Nimsoft Monitor for WebLogic, the Nimsoft Monitor product family includes solutions for RedHat Linux, Apache Tomcat, IBM WebSphere, Microsoft Active Directory, Citrix, JBoss, Microsoft Exchange, Microsoft IIS, IBM Lotus Notes, SAP R/3, and other widely deployed applications. These are complemented by database modules for IBM DB/2, IBM Informix, Oracle, Microsoft SQL Server, and Sybase ASE; server platform solutions for Windows, UNIX, Linux, IBM Power Systems (formerly AS/400 and iSeries), and Novell Open Enterprise Server (formerly NetWare); and solutions for managing network infrastructure, including routers, switches, and firewalls.

### Requirements

The Nimsoft Monitor for WebLogic requires the JSR 160 API to be installed.

### Checkpoints Monitored

The Nimsoft Monitor for WebLogic monitors relevant checkpoints for:

- Java Virtual Machine (JVM)
- Execution queues and threads
- Enterprise Java Beans (EJB)
- Servlets and Java Server Pages (JSP)
- Java Transaction API (JTA)
- Java Database Connection Pools (JDBC)
- Java Messaging Services (JMS)
- Java Connector Architecture (JCA)



## About Nimsoft

Nimsoft is a global leader in IT Management-as-a-Service. The company's lightweight ITMaaS solutions make it easy for enterprises and service providers to implement comprehensive, adaptable monitoring and service desk capabilities essential for managing today's dynamic computing environments. Learn more at [www.nimsoft.com](http://www.nimsoft.com).

### North America Headquarters

U.S. toll free:  
1 877 SLA MGMT (752  
6468)  
1 408 796 3400

Email: [info@nimsoft.com](mailto:info@nimsoft.com)  
Web: [www.nimsoft.com](http://www.nimsoft.com)

### United Kingdom

+44 (0) 845 456 7091

### Norway & Northern Europe

+47 22 62 71 60

### Germany

+49 (0) 89 - 99 61 90 60

### Australia

+61 (0)2 9236 7216

### Brazil

+5511 5503 6243

### Mexico City

+52 (55) 5387 5406

### Singapore

+65 64328600

### New Delhi

+(91 11) 6656 6667

### Mumbai

+(91 22) 66413800