

# Nimsoft Monitor for Lotus

## Insights for Maximizing Service Levels

### Features

- Multi-point Lotus Notes Client response time monitoring.
- Centralized monitoring for remote Lotus Domino servers.
- Real-time Lotus Notes business service dashboards.
- Performance trending with SLA compliance monitoring and reporting.
- Rapid installation, flexible deployment, and ease of use.

### Benefits

- Increased application visibility accelerates problem identification and resolution.
- Monitoring from an end-user's perspective preempts reduced business productivity.
- Proactive notifications help business service managers prevent SLA compliance breaches.

### Introduction

Lotus Notes deployments require maximum network, database, and service availability. To achieve this requirement, it is crucial to proactively monitor end-to-end performance of all infrastructure components for improved quality of service and business productivity.

### The Solution

#### Lotus Domino Server Monitoring

Nimsoft Monitor provides full health status visibility and proactive alerting for Lotus Domino servers. The lightweight probe supports centralized, multi-server monitoring and can be widely distributed for load-balanced deployments. The probe's GUI speeds monitoring deployment by discovering and pre-populating itself with available Domino servers. A single-click "fetch" utility confirms probe-to-server connectivity and displays Domino server state, version number, latency statistics, and load index. Unique monitoring profiles can be defined per Domino server. Health checks include Domino server availability, 500+ server statistics, CPU, database, disk, mail, memory, process, users, and much more. Domino server logs are easily monitored with alert generation for noteworthy events. Additionally, the probe monitors Domino servers for failover and follows the failover server for continued health status monitoring.

#### Lotus Notes Client Monitoring

Nimsoft Monitor provides insights into end-users' service level experience with Notes applications. The solution supports multi-location deployment to gain quality of service perspectives from widespread group participants. From the Lotus Notes client perspective the probe monitors Domino server availability and response times (client-to-server and server-to-client), Lotus Notes email round-trip response times, and Lotus Notes database response times.

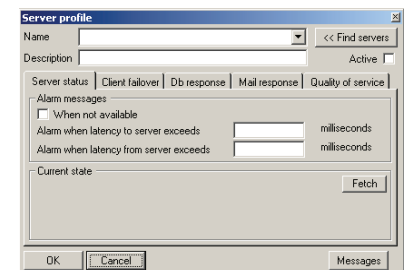
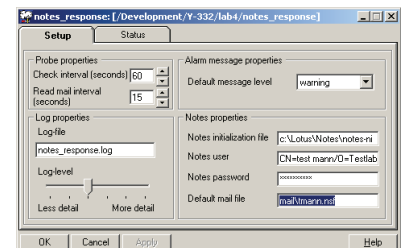
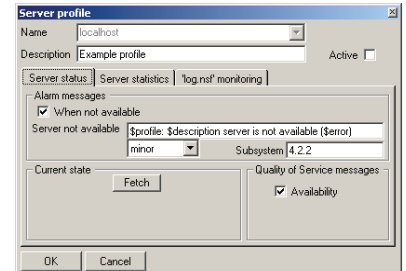
Once collected and consolidated, all Lotus Domino and Notes alarm and performance data can be analyzed and displayed in real-time Nimsoft Monitor business service dashboards, performance trend reports, and SLA compliance reports. For remote notification, Lotus Domino and Notes alerts can be issued via various gateways, such as GSM/SMS, WAP, PDA, SNMP, ADO, ODBC, and email.

## Monitoring Lotus Notes Application Performance from the End-user's Perspective

- Supports multi-location, group-member deployment
  - Domino Server availability and response time monitoring
  - Client-to-server availability
  - Client-to-server latency
  - Server-to-client latency
- Lotus Notes email response time monitoring
  - Client-to-server round-trip email response time
  - Define user id and mail file
  - Resolves user id with address book lookup
- Lotus Notes database response time monitoring
  - Select database from pre-populated list
  - Response time of database open
  - Single-click to fetch current value
- Domino Server failover monitoring
  - Alerts on primary server failover
  - Monitoring automatically follows to failover server

## Comprehensive Lotus Domino Server Monitoring

- Supports centralized, multi-server monitoring
- Lightweight probes enable load-balanced deployments
- Pre-populated server list speeds monitoring configuration
- Supports unique monitoring profiles for each Domino Server
- "Fetch" utility confirms client/server connectivity and displays:
  - Domino Server state
  - Domino Server version number
  - Domino Server latency statistics (to and from)
  - Domino Server load index
- Includes the following Domino Server monitors:
  - Domino server availability
    - CPU
    - Database
    - Disk
    - Mail
    - Mailboxes
    - Memory
    - Process
    - Server
    - Users
    - and many more
  - Domino server event logs
  - Any log entry can be singled out for alerting





## About Nimsoft

Nimsoft is a global leader in IT Management-as-a-Service. The company's lightweight ITMaaS solutions make it easy for enterprises and service providers to implement comprehensive, adaptable monitoring and service desk capabilities essential for managing today's dynamic computing environments. Learn more at [www.nimsoft.com](http://www.nimsoft.com).

### North America Headquarters

U.S. toll free:  
1 877 SLA MGMT (752  
6468)  
1 408 796 3400

Email: [info@nimsoft.com](mailto:info@nimsoft.com)  
Web: [www.nimsoft.com](http://www.nimsoft.com)

### United Kingdom

+44 (0) 845 456 7091

### Norway & Northern Europe

+47 22 62 71 60

### Germany

+49 (0)89 - 99 61 90 60

### Australia

+61 (0)2 9236 7216

### Brazil

+5511 5503 6243

### Mexico City

+52 (55) 5387 5406

### Singapore

+65 64328600

### New Delhi

+(91 11) 6656 6667

### Mumbai

+(91 22) 66413800