

Nimsoft Monitor for Cluster Servers

Enabling High Availability Application Management on Microsoft and Veritas Cluster Servers

Features

- Single view into the entire clustered infrastructure—including clusters, service groups, and resources as well as associated operating systems and applications.
- Robust, intuitive management interface makes all administrative tasks fast and easy.
- Extensive quality-of-service metrics can be tracked, and automated alerts generated if any elements exceed performance or availability thresholds.

Benefits

- Enjoy cost and time savings through streamlined administration of complex clustered networks.
- Improve system performance and availability through improved infrastructure visibility.
- Ensure SLA compliance of business-critical HA services.

Introduction

For many organizations, application downtime is simply not an option. That's why the adoption of Microsoft and Veritas high availability (HA) clustering solutions has become increasingly widespread. With these solutions in place, organizations are able to leverage sophisticated system redundancy to improve uptime for their critical applications.

Yet with these failover solutions deployed, controlling service delivery, both from an operational and application perspective, becomes exceedingly complex. To be effective, administrators need a cohesive view of this intricate system and all its associated components—but traditional systems management solutions only provide isolated, component-centric views. Consequently, administrators often fail to get continuous monitoring visibility during failover situations, receive duplicate alarms, and get false status information.

The Solution

With Nimsoft Monitor for Cluster Servers, administrators can manage all HA components from a single, intuitive interface. Nimsoft Monitor comprehensively monitors applications in clustered environments—regardless of which active node they are running on. During HA failover conditions, Nimsoft Monitor maintains consistent, uninterrupted alarm generation and quality-of-service data, so administrators can immediately receive appropriate notification. As a result, administrators can significantly reduce the time spent monitoring, while gaining the timely, accurate insights they need to spot, and address, potential issues before they have an impact on service delivery.

Cluster Awareness Yields Accuracy and Efficiency

Nimsoft Monitor offers cluster awareness that simplifies and takes the guess work out of monitoring Microsoft and Veritas cluster environments. When deployed, Nimsoft Monitor is installed on each node in the cluster. Each probe maintains continuous communication with the Microsoft and Veritas cluster service to identify changing cluster configurations and automatically migrate monitoring across cluster nodes whenever needed.

Data Sheet

This automatic movement of the solution's monitoring ensures that all applications within a cluster will always be monitored for high availability and performance—regardless of where a process, service, application, or application subsystem moves within a cluster. With Nimsoft Monitor, no manual activation, reconfiguration, or duplication of monitoring is required.

Nimsoft Monitor equips administrators with fast, intuitive insights, providing notification of state changes through real-time alarms in dashboards and color-coded text alarm views. Nimsoft Monitor can identify these cluster state changes:

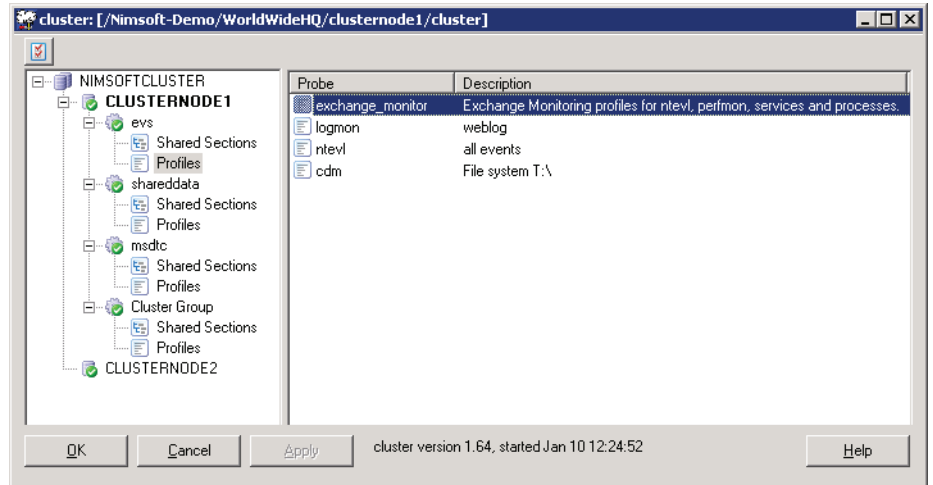
- Cluster node
- Up/down
- Cluster resource group
- Pending offline/online
- Online/offline
- Moved
- Stopped

Nimsoft Monitor supports Microsoft cluster servers on Windows and Veritas cluster servers on Windows, Linux, and Solaris. Nimsoft Monitor supports the following cluster configurations:

- Active/Active
- Active/Passive
- N+1 (Microsoft Exchange clusters)

Insights for Proactive Management

Nimsoft Monitor offers a range of features that enable customers to proactively manage multi-node cluster environments:



- **Complete HA visibility.** Nimsoft Monitor can be used to monitor and report on the availability and performance of the entire HA system, from cluster servers, nodes, service groups, and resources through to the operating system and hosted application.
- **Continuous monitoring coverage.** Nimsoft Monitor monitors the status of essential cluster processes and resources, ensuring core components are available at all times.
- **Automated alerts.** Warnings and or alarms are generated based on user-defined thresholds for operational and failover conditions.

Cohesive Views of the Entire Infrastructure

Nimsoft Monitor is complemented by over 120 Nimsoft Monitor network, server, database, and application monitoring solutions. This set of solutions provides mission critical availability and performance monitoring of the

popular commercial and home grown applications that get deployed within Windows, Linux, and UNIX (Solaris) cluster configurations. In clustered environments, Nimsoft Monitor can be integrated with these application probes, meaning monitoring profiles are automatically migrated along with the monitored applications whenever the Microsoft or Veritas cluster service initiates a scheduled failover.

Part of the Nimsoft Monitor Family

With Nimsoft solutions, enterprises and service providers gain a centralized, cohesive view of their entire infrastructure. Whether an IT organization wants to monitor a specific network element, or the entire infrastructure on which a mission-critical application is based—including the associated network elements, databases, application servers, and more—they can do it all with the Nimsoft Monitor product suite.



About Nimsoft

Nimsoft is a global leader in IT Management-as-a-Service. The company's lightweight ITMaaS solutions make it easy for enterprises and service providers to implement comprehensive, adaptable monitoring and service desk capabilities essential for managing today's dynamic computing environments. Learn more at www.nimsoft.com.

North America Headquarters

U.S. toll free:
1 877 SLA MGMT (752
6468)
1 408 796 3400

Email: info@nimsoft.com
Web: www.nimsoft.com

United Kingdom

+44 (0) 845 456 7091

Norway & Northern Europe

+47 22 62 71 60

Germany

+49 (0)89 - 99 61 90 60

Australia

+61 (0)2 9236 7216

Brazil

+5511 5503 6243

Mexico City

+52 (55) 5387 5406

Singapore

+65 64328600

New Delhi

+(91 11) 6656 6667

Mumbai

+(91 22) 66413800